





# TONI ONLEY



## Edge Of Space

watercolour chine collé, etching  
printed on Somerset 100% rag paper  
edition 75, 8 artist's proofs, signed by the artist  
58.5 x 49 cm. (23 x 19.5")  
released October, 2002  
issue price \$700

Editions published  
in partnership with  
Canadian artists  
in support of  
children,  
their art education  
and their future.

artists  
for  
kids

**TONI ONLEY**, the *flying artist*, is one of the most highly respected landscape artists working in Canada today. He is a modern day explorer with an insatiable curiosity to travel all reaches of the world in search of line, shape and colour. While he is best known for his watercolours and prints, it is his unmistakable style and succinct vision that sets him apart from other artists.

Onley was born November 20, 1928 on the Isle of Man, off the west coast of Britain in the Irish Sea. The Isle of Man was a perfect setting for a perceptive youngster to explore the landscape. At the age of 10, he recalled "going on long walks with his grandmother she with her book of verse and me with my box of watercolours. We would rest on the brow of a hill, I would paint and she read to me Wordsworth or Keats" and thus began a life long quest for the young artist. Following grade school, he enrolled in the Douglas School of Art and began a formal education which included an introduction to drawing, watercolour painting and etching. Difficult financial times following the Second World War forced the Onley family to emigrate to Canada in 1948 and, after a brief stay in southern Ontario, they settled in Penticton, British Columbia.

His quest for learning and creating the perfect painting has never subsided. While in living in Ontario, he was fortunate to study with Carl Schaeffer and discovered the inspirational watercolours of David Milne. Two years following his move to BC in 1955, his urge to travel and learn took him to the Instituto Allende in Mexico. It was there, fuelled by frustration and the challenges of abstraction, that he discovered amazing success with collages created with his torn paintings. In 1964 he received a Senior Canada Council Fellowship and returned to England to study etching. While in London at that time, he rediscovered his roots by frequenting art museums showing the nineteenth century watercolour paintings of J.M.W. Turner, Cotman and Cox.

He is a prolific painter and printmaker. Since his first one man show in the Vancouver Art Gallery in 1958, he has exhibited regularly across Canada, in Great Britain and in the United States. His work is included in numerous private and public collections including the National Gallery of Canada in Ottawa, the Tate Museum, the Royal Albert & Victorian Museum in London, England, the Museum of Modern Art in New York City and of course, the Artists For Kids Gallery.

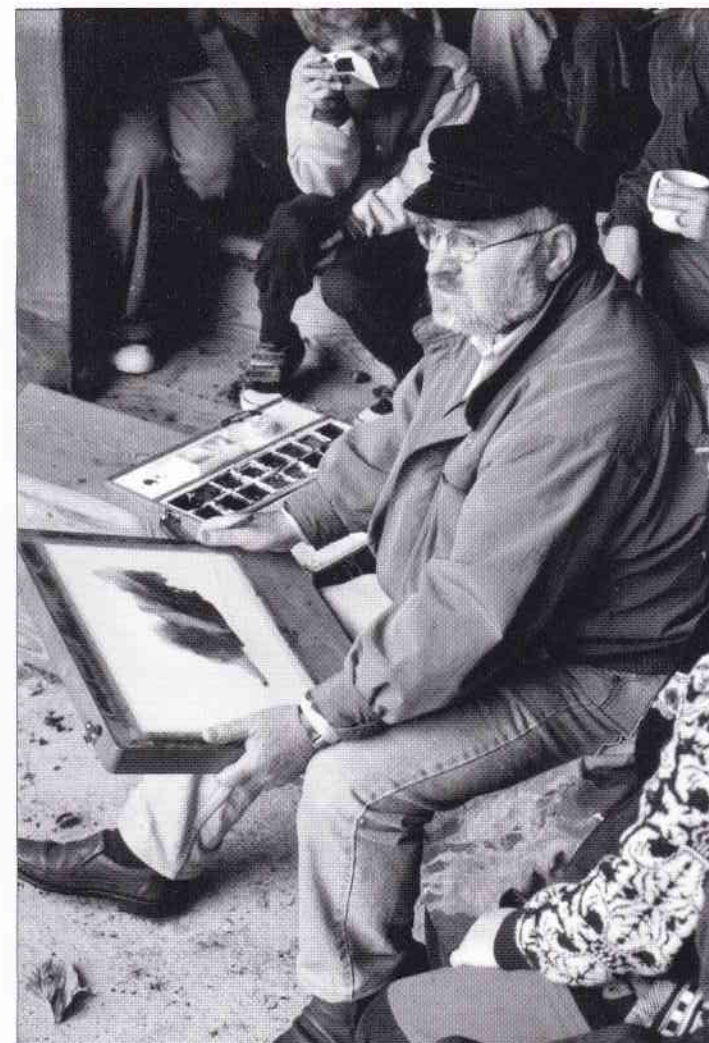
The chine collé etching, *Edge Of Space* was developed from a collage created from cut-up sections of watercolour paintings. Collage has been a constant source of inspiration for Onley over the years, beginning with torn canvases in the sixties and continued to his present day work. The dynamic of landscape space coupled with subtle hand-painted brushwork shapes combine to make each of these prints unique.

To make an appointment to view Onley's print *Edge Of Space*, or if you require more information on other Artists for Kids prints or its programs, please contact Bill MacDonald, Managing Director, Artists For Kids Gallery, 810 West 21st Street, North Vancouver, BC Canada. V7P 2C1

Phone: 604.903.3797 Fax: 604.903.3778

e/mail: bmacdonald@nvsc44.bc.ca

Visit and bookmark our web site at: [www.artists4kids.com](http://www.artists4kids.com)



Toni Onley has been a constant and generous contributor to Artists For Kids programs over the years. He is shown demonstrating watercolour to young painters at the Artists For Kids summer camp.

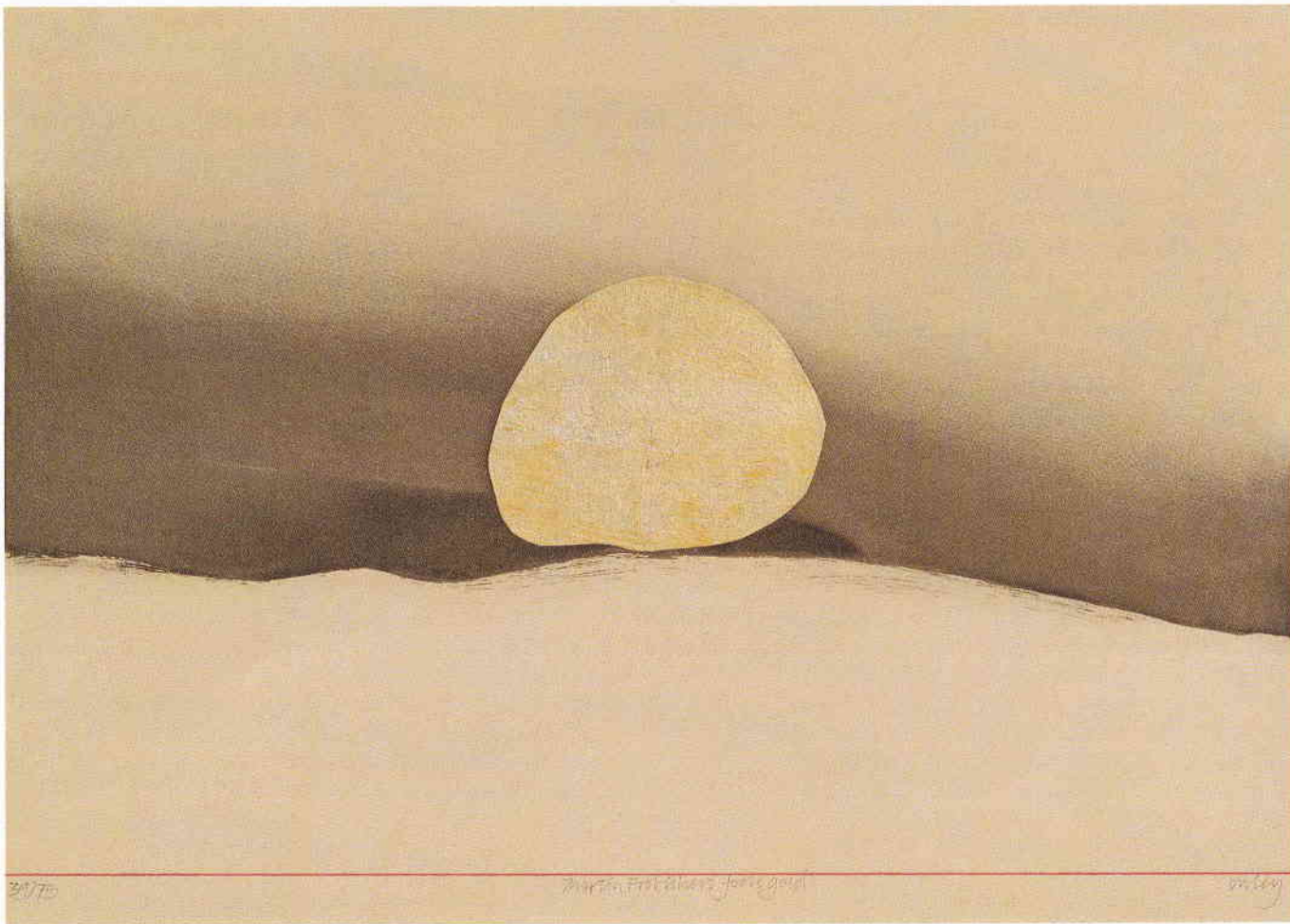
## ARTISTS FOR KIDS

The Artists For Kids Trust was established in 1989 through a generous partnership between some of Canada's finest artists and the North Vancouver School District. Its mission, through the sale of original prints created by its artist patrons is to build an art education legacy for the children of British Columbia. Artists For Kids provides a variety of art enrichment program opportunities for thousands of students of all ages each year, including the popular Paradise Valley Summer School of Visual Art.

Canadian artists who have generously supported the program include: Toni Onley, Douglas Coupland, Kenjoak Ashevak, Roz Marshall, Robert Davidson, the late Jack Shadbolt, Edward J. Hughes, Robert Young, Jane Ash Poitras, Ted Harrison, Michael Snow, the late Jean McEwen, Robert Bateman, David Blackwood, Betty Goodwin, Gordon Smith, Joe Fafard, Gathie Falk, Alan Wood, Guido Molinari, Molly Lamb Bobak, Anne Meredith Barry, Takao Tanabe, George Littlechild, Irene F. Whittome, Arnold Shives, Ann Kipling, Charles van Sandwyk, the late Bill Reid, the late B.C. Binning and the estate of Frederick and Betty Amess.



# TONI ONLEY



artists  
for  
kids



**Artists for kids**  
original prints  
are published in  
partnership with  
Canadian artists in  
support of children,  
their art education  
and, their future.

## Martin Frobisher's foolsgold

3 colour intaglio/chine collé, edition 75, 8 artist's proofs  
signed and numbered by the artist  
printed on Arches 100% rag paper  
52 x 67 cm. (20 x 26")  
released September, 1997  
issue price: \$700

## TONI ONLEY

Toni Onley, the *flying artist*, is one of the most highly respected landscape artists working in Canada today. He is a modern day explorer with an insatiable curiosity to travel to all reaches of the world in search of line, shape and colour. While he is best known for his watercolours and prints, it is his unmistakable style and succinct vision that sets him apart from other artists.

Toni Onley was born in 1928 on the Isle of Man, off the west coast of Britain in the Irish Sea. The Isle of Man was a perfect setting for a perceptive youngster to explore the landscape. While loving to draw and paint from a very early age, he credits the influence of his grandmother for instilling in him a love of the land. At the age of 10, he recalls "going on long walks with her on summer afternoons through glens and mountains, along coastal trails, she with her book of verse and me with my box of watercolours. We would rest on the brow of a hill, I would paint and she read to me Wordsworth or Keats" and thus began a life long quest for the young artist. Following grade school at the age of 14, he enrolled in the Douglas School of Art and began a formal education which included an introduction to drawing, watercolour painting and etching. Difficult financial times following the Second World War forced the Onley family to emigrate to Canada in 1948 and, after a brief stay in southern Ontario, they settled in Penticton, British Columbia.

Toni Onley's quest for learning and creating the perfect painting has never subsided. While in living in Ontario, he was fortunate to study with Carl Schaeffer and discovered the inspirational watercolours of David Milne. Two years following his move to BC in 1955, his urge to travel and learn took him to the Instituto Allende in Mexico. It was there, fuelled by frustration and the challenges of abstraction, that he discovered amazing success with collages created with his torn paintings. In 1964 he received a Senior Canada Council Fellowship and returned to England to study etching. While in London at that time, he rediscovered his roots by frequenting art museums showing the nineteenth century watercolour paintings of J.M.W. Turner, Cotman and Cox.

He is a prolific painter and printmaker. Since his first one man show in the Vancouver Art Gallery in 1958, he has exhibited regularly across Canada, in Great Britain and in the United States. His work is included in numerous private and public collections including the National Gallery of Canada in Ottawa, the Tate Museum, the Royal Albert & Victorian Museum in London, England, and the Museum of Modern Art in New York.

The chine collé etching, *Martin Frobisher's foolsgold* was inspired by a forboding Arctic landscape and the fascinating tale of the English explorer, Martin Frobisher, who, while searching for the Northwest Passage in 1576, created a frenzy for gold exploration and false investment in the new land. The artist's adept brushwork captures the mystique of the northern landscape and depicts his intrigue with the history of Arctic exploration.



Toni Onley proudly poses with a demonstration painting created during an Artists For Kids enrichment workshop.

## ARTISTS FOR KIDS

The Artists For Kids Trust was established in 1989 through a generous partnership between some of Canada's finest artists and the North Vancouver School District. Its mission, through the sale of original prints created by its artist patrons, is to build an art education legacy for the children of British Columbia. The Artists For Kids Gallery is home to a stunning collection of work created by its parton artists. Artists For Kids provides a variety of art enrichment program opportunities for thousands of students of all ages each year including the popular Paradise Valley Summer School of Visual Art.

Canadian artists who have generously supported the program include: Toni Onley, Jack Shadbolt, E.J. Hughes, Kenojuak Ashevak, Jane Ash Poitras, Ted Harrison, Michael Snow, Jean McEwen, Betty Goodwin, David Blackwood, Bill Reid, Gordon Smith, Robert Bateman, Joe Fafard, Gathie Falk, Alan Wood, Guido Molinari, Molly Lamb Bobak, Anne Meredith Barry, Takao Tanabe, George Littlechild, Irene F. Whittome and the estates of the late B. C. Binning and the late Frederick Amess.

To make an appointment to view *Martin Frobisher's foolsgold*, or if you require more information regarding other Artists For Kids prints or programs for young artists, please contact the Managing Director, Bill MacDonald. 810 West 21st Street, North Vancouver, B.C. Canada V7P 2C1  
Telephone: (604) 987.6667 Facsimile: (604) 987.8967 E-mail: bmacdonald@nvcnvr.schdist44.bc.ca  
Visit and bookmark our web site at: <http://www.artists4kids.com>



*Artists For Kids proudly presents*

# The Travels of Toni Onley

*featuring:*

- an exhibition and sale of 20 travel watercolours
- the release of his glowing new AFK print  
*"Martin Frobisher's foolsgold"*
- a travelogue slide presentation by the artist

Thursday, September 25, 1997

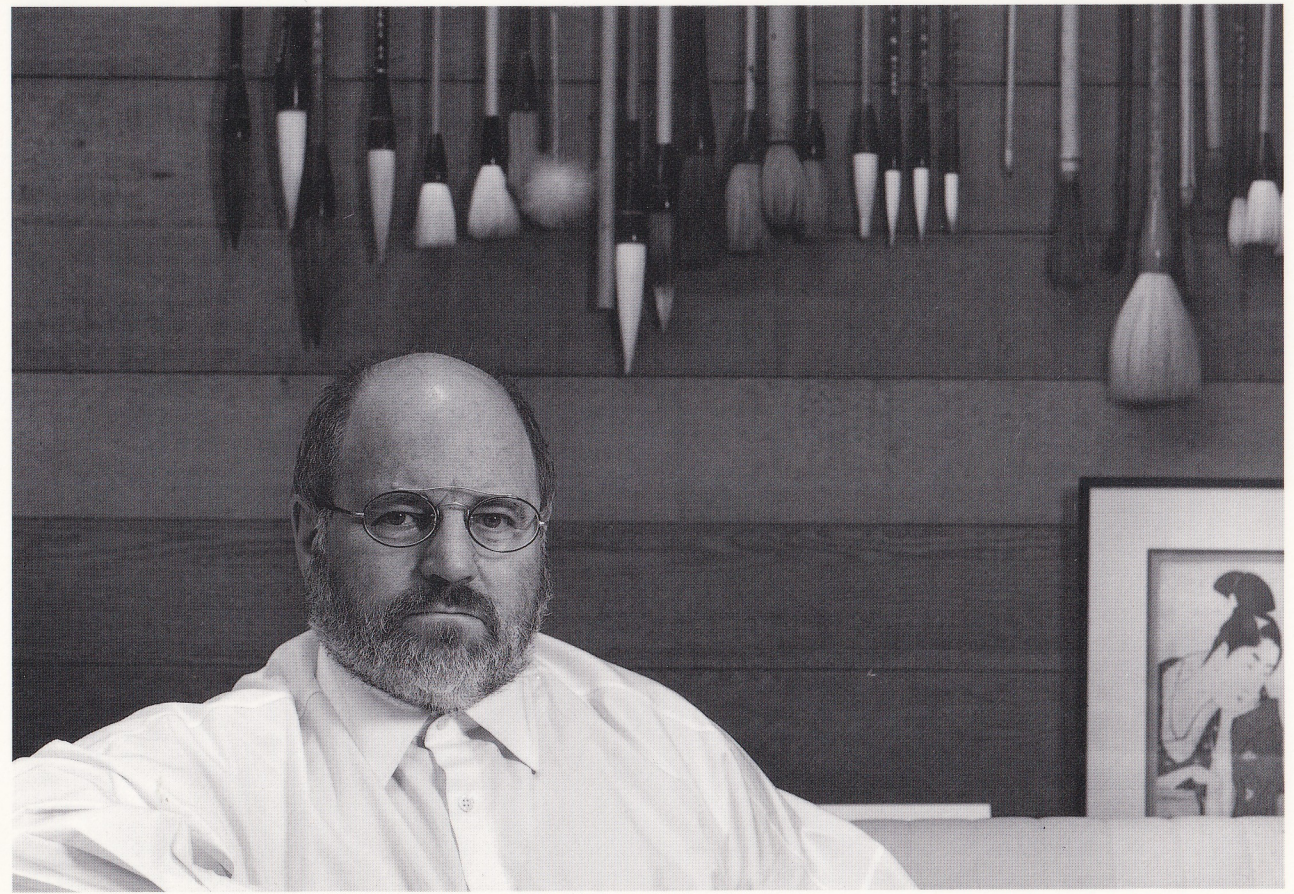
7:00-9:30pm

## Artists For Kids Gallery

810 West 21st Street, North Vancouver, BC

limited seating, for reservations call: 987-6667-25







# TONI ONLEY



TIDE POOL, PINE ISLET, B.C., OIL ON CANVAS, 50 x 68 INCHES, 1990.

## PAINTINGS & WATERCOLOURS

AUGUST 18-SEPTEMBER 1, 1990  
OPENING: SATURDAY, AUGUST 18  
FROM 12:00-3:00 P.M.  
THE ARTIST WILL BE IN ATTENDANCE.

2247 GRANVILLE STREET  
VANCOUVER, B.C., CANADA  
V6H 3G1

FAX 604 732-4245  
TELEPHONE 604 732-6505  
HOURS: 10-6, TUESDAY-SATURDAY

MEMBER: PROFESSIONAL ART DEALERS' ASSOCIATION OF CANADA



HEFFEL  
GALLERY  
*limited*



*"Island Shore", 1976, Oil on Panel, 20"x24"*

TONI  
ONLEY

NOVEMBER 1994

EQUINOX  
GALLERY

2321 GRANVILLE STREET, VANCOUVER, CANADA V6H 3G3  
TELEPHONE (604) 736-2405 FAX (604) 736-0464

## TONI ONLEY: AN IMPRESSION

There are some painters who are restlessly modern in the sense that they see art as a moving frontier; a kind of relentless progression in which the past, if not denied, must be kept in its place, and the vital artists always move forward, resolutely contemporary, self-consciously experimental, always in search of the next "breakthrough". In the process they tend to secede from tradition and to abandon the links with the broader community that transform the artist from a solitary into a social being.

There are other artists who have gone through their periods of experimentation and have learnt all they can in the process; they then take their place with the tradition, drawing on its resources to reinforce their individual visions. Toni Onley is one of these artists. One remembers the splendid experimental works of his earlier days, and in hindsight one can perceive a lyricism which these abstract paintings and collages share with the landscapes of Canadian and foreign scenes that came to our mind when we think of "Onleys".

Toni Onley's turning to landscape placed him in a great international but also Canadian tradition. He himself has said how much he gained from going back and studying the classic British watercolourists, Cotman and the Cromes, and I remember, when we were together in India, how eagerly he sought out the work of the English wandering painters who had preceded him there in the days of the British Raj. But landscape is also a notable Canadian tradition; in historical and cultural terms it is our most important genre of painting.

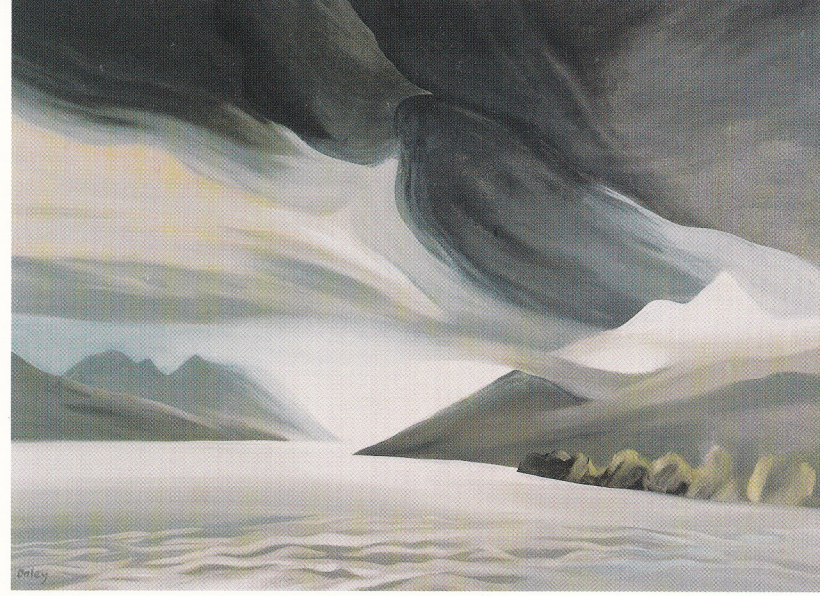
Thus, in turning to landscape, Toni Onley has taken his place in a distinctive Canadian succession, but he has done so in a personal way, and without in any sense breaking with his past. His landscapes are indeed evocative of scenes that move and excite him, but scenes transformed by the trained eye and the responding hand into forms that not only evoke places but also exist as autonomous patterns, abstractions of another kind than the more strictly formal patterns of his earlier days. But the links between the two modes are often close. I remember some watercolours Toni did on a trip back to the Isle of Man, of megalithic monuments in a grey, rainy world, and they seemed almost as purely abstract as anything he had done in the past.

What Toni Onley essentially offers us are natural forms, transformed into images that commemorate their originals yet live in their own light. It is the art of a lyrical awareness transmitted by a hand that wields the broad oriental brush with swift and superb sureness.

**George Woodcock, 1988**



# TONI ONLEY



"GRANITE POINT, QUIET LAKE", oil on canvas, 30" X 40", 1991



**WESTCOAST  
POINTS  
OF  
VIEW**

- 
- 
- 

**ONLEY  
SMITH  
TANABE**





TONI ONLEY

## TONI ONLEY

Toni Onley was born in 1928 on the Isle of Man, where he received his early training in watercolour painting. He came to Canada in 1948 and moved to British Columbia in 1955. His landscapes are influenced by nineteenth-century British art and by Chinese and Japanese traditional painting. Public galleries that have collected his work include the Tate Gallery and the Victoria and Albert Museum, London, the National Gallery of Canada in Ottawa, the Seattle Art Museum, the Vancouver Art Gallery, the Library of Congress, Washington DC and the Art Gallery of Greater Victoria. Onley was made an Officer of the Order of Canada in 1999.

This current exhibition of paintings and collages by Toni Onley, Canada's best known landscapist, coincides with the premiere Victoria launch of his new book titled *Flying Colours*, the Toni Onley story as told by Gregory Strong. In *Flying Colours*, Onley paints a self-portrait in words, giving us a sweeping canvas that stretches from a rustic riverbank on the Isle of Man to a plane wreck on a British Columbian glacier.



MEET  
**TONI ONLEY**

AT WINCHESTER GALLERIES  
1545 FORT STREET

*for an Exhibition and Sale of  
New Paintings  
and Book signing*

**Special Preview**  
**Saturday, March 8, 2003**  
10:00 am – 5:30 pm

**Opening Reception**  
**Sunday, March 9, 2003**  
1:00 pm – 5:00 pm

Toni Onley will be in attendance  
Elizabeth Ely, harpist, will be performing

Exhibition continues until March 29, 2003



**WINCHESTER GALLERIES**

1545 Fort Street, Victoria, B.C. V8S 1Z7 Tel (250) 595-2777 Fax (250) 595-2310  
www.winchestergalleriesltd.com art@winchestergalleriesltd.com



Robert Murray



**WINCHESTER GALLERIES**

Canadian Contemporary and Historical Paintings

1545 Fort Street, Victoria, B.C. V8S 1Z7 Tel (250) 595-2777 Fax (250) 595-2310  
www.winchestergalleriesltd.com art@winchestergalleriesltd.com