

anne meredith barry

journals and translations

november 9 - november 28

saturday

2 - 5 pm

Hi - I'm progressing well,
& am now back in the
studio for the mornings.
But doctors won't let
me travel to Toronto
when I can't even drive
to the corner yet! I'm
tottering around well,
but am very impatient.
♡ A.

gallery one

121 scollard st.

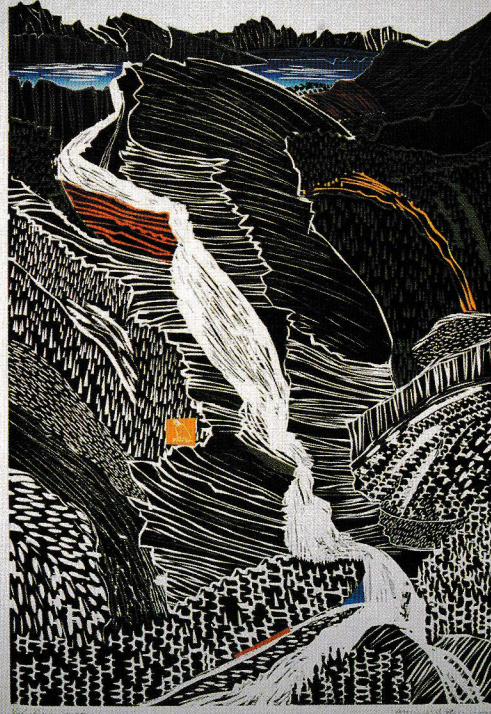
toronto, ontario

m5r 1g4

galleryone@galleryone.ca

416 929 3103 www.galleryone.ca

image/november colours, 2002, mixed media on paper, 44 X 30"



Snow Melt #1 & #2, 2002, Ed. 55 Woodcut/woodcut collé, Image: 35 x 24", Published by Geraldine Davis & Company

Anne Meredith Barry

Anne Meredith Barry

(1931– 2003)

Anne was forever hunting beauty in wild places. Snow Melt #1 & #2 began as small sketches she made in the helicopter as the pilot approached Gros Morne Mountain, Newfoundland. She was the first artist-in-residence at Gros Morne National Park.

We are honoured to represent her and her outstanding work. Please visit our site to view Anne's other exceptional prints or call us to arrange a presentation at your convenience. Many of her images have sold, or are selling, out. A CD-Rom of all her prints will soon be available upon request.



Also new works by

Otis Tamasauskas

Field Notes & Blue Salmon, 2002

Edition 4, Lithograph

Image: 25.5 x 38"

Paper: 30 1/2 x 44"

Geraldine Davis & Company

11 Galley Avenue,

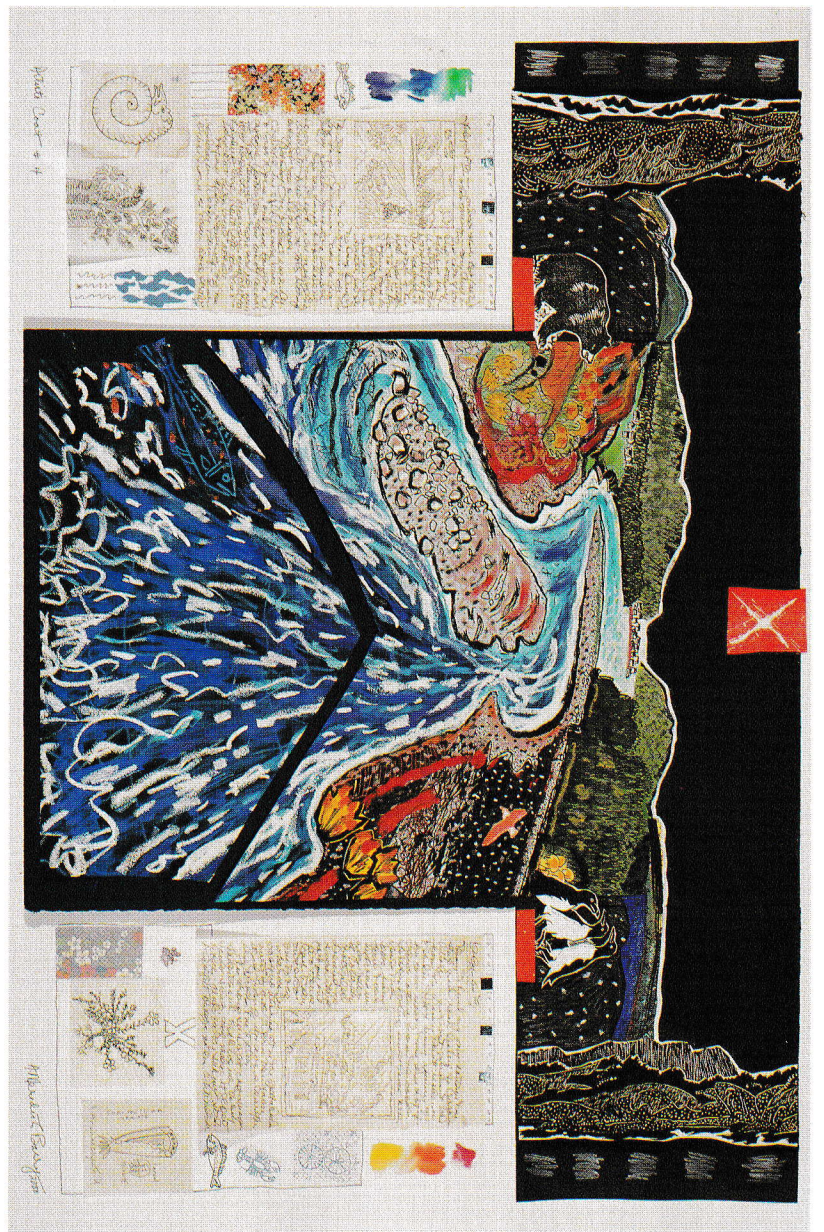
Toronto, ON Canada M6R 1G9

Tel: (416) 535-4766 Fax: (416) 535-9181

www.geraldinedavisart.com



Anne Meredith Barry, Mountain Sunstorm 26/35, screen image on rag paper, 35 x 26" printed in 14 colours, 1995.



Anne Meredith Barry "Artist's Robe #4" 2000 mixed media on rag paper 32" x 48" ©Anne Meredith Barry

Anne Meredith Barry

paintings

Nov.10 - 29, 2000

Opening reception:

Friday, November 10 from 5-7:30 pm

Please join us!

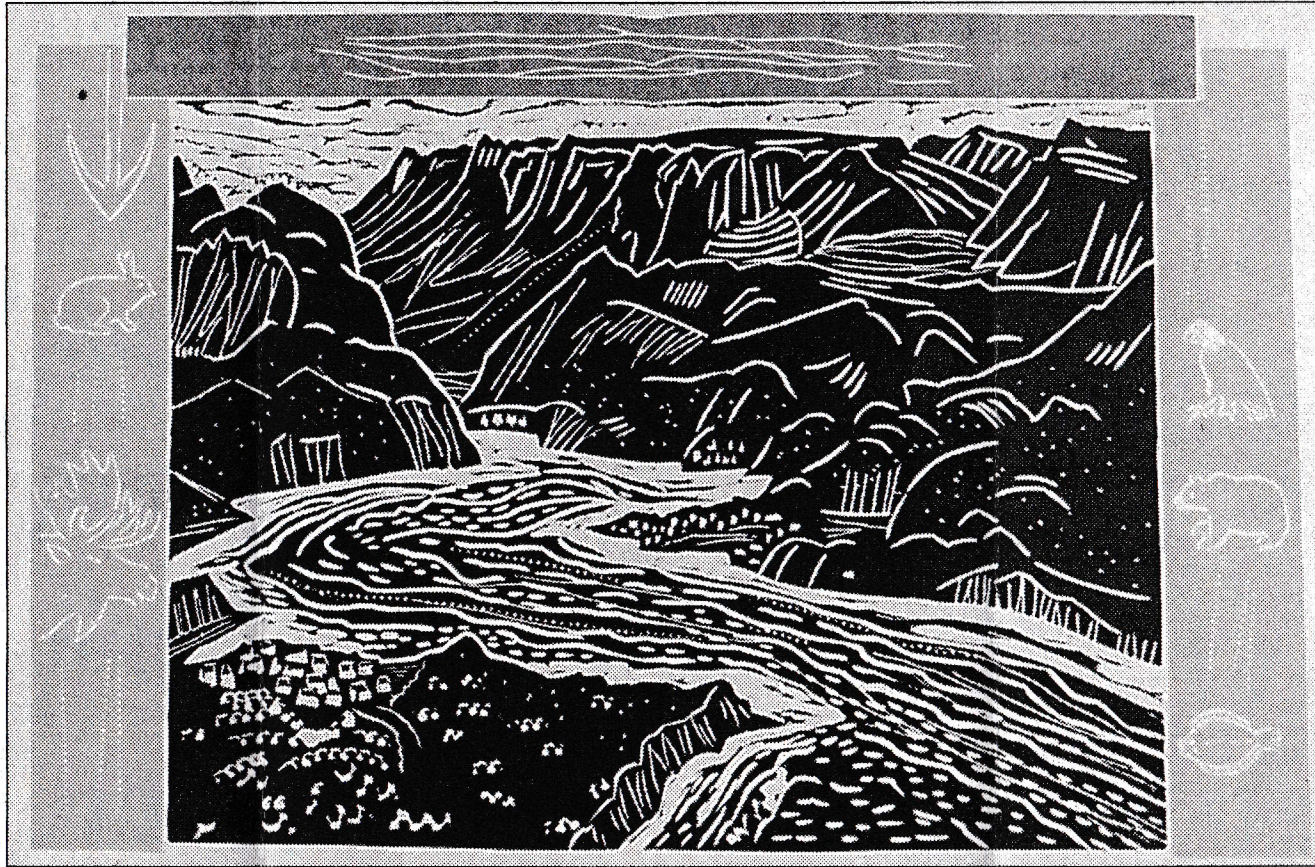
**We are now open
Sundays, from 1-5**

Studio 21
FINE ART GALLERY

1223 Lower Water Street, Halifax, Nova Scotia B3J 3S8 Canada
phone: (902) 420-1852 fax: (902) 420-0715 email: studio21@ns.sympatico.ca

Gallery hours: Tues. - Fri. 11-6 Sat. 10-5 Sun. 1-5

Art of Gros Morne revealed



GARY HEBBARD/THE TELEGRAM

This page from Gros Morne Time Lines has a black-and-white linocut by Anne Meredith Barry. Tara Bryan also contributed artwork to this limited edition artist's book, while Kevin Major wrote the text.

The Telegram

Sunday, September 10, 2000 3

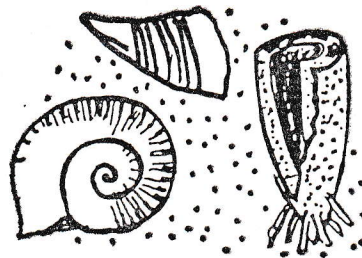
You are cordially invited
to the St. John's launch
of

Gros Morne Time Lines

a limited edition artist's book
by

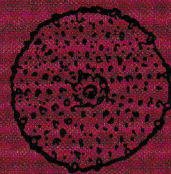
Anne Meredith Barry
Tara Bryan
Kevin Major

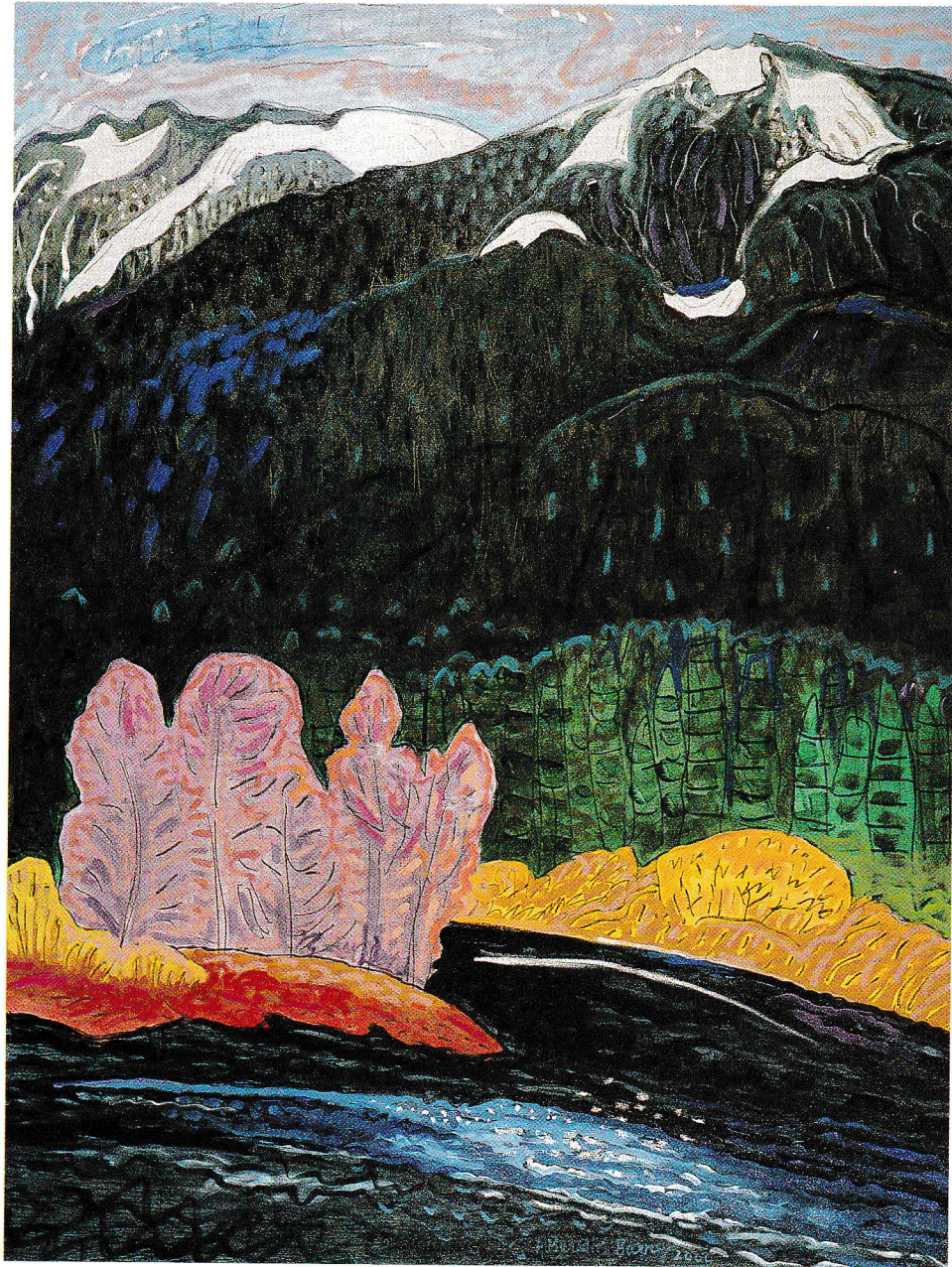
on Saturday,
September ~~16~~, 2000
from 1:30 to 3:30 p.m.
at Emma Butler Gallery
111 George Street West



Gros Morne Time Lines

*a limited edition artist book by
Anne Meredith Barry, Tara Bryan,
and Kevin Major*





ANNE MEREDITH BARRY

RECENT PAINTINGS

Please join us at our opening reception on Saturday, November 4, 2 to 5pm
Artist will be present

Exhibition continues until November 22, 2000

gallery one

Tues.-Sat. 10:30 to 5:00pm

121 Scollard St. Toronto, ON, Canada, M5R 1G4

(416) 929 3103 Fax: 929 0278 gallone@istar.ca www.artgalleryone.com

Member of Professional Art Dealers Association

Anne Meredith Barry

"Mountain Valley Spring #2", 2000, oil on canvas, 48 x 36 inches

LAND AND SEA

EIGHT

ARTISTS

FROM

NEWFOUNDLAND

LAND AND SEA

EIGHT

ARTISTS

FROM

NEWFOUNDLAND

curated by

JOHN FAIRLEIGH, The Queen's University of Belfast, Northern Ireland
CHRIS WILSON, The Glebe House and Gallery, Donegal, Ireland

project co-ordinated by

BONNIE LEYTON, Newfoundland



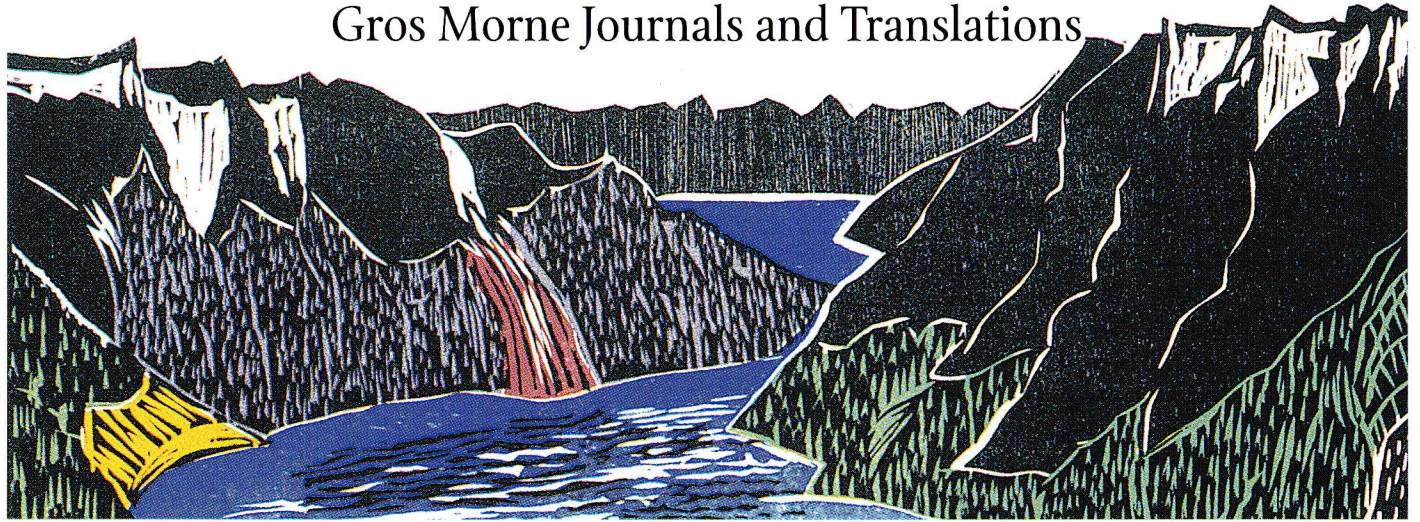
EMMA BUTLER GALLERY

111 George Street West, St. John's, NF A1C 6K2
(709) 739-7111 www.emmabutler.com emmab@roadrunner.nf.net

Front Cover: Berg, Boat and Nimbus o/c 24" x 36" 2002

Anne Meredith Barry

Gros Morne Journals and Translations



Anne Meredith Barry, Snow Melt #1, 2000, woodblock, 41 1/2 x 29 1/2"
PHOTOGRAPH: NED PRATT

Anne Meredith Barry

Gros Morne Journals and Translations

Paintings, Prints, Mixed Media and Bookworks

June 21 to September 15

Closing reception: Friday, September 7, 5-7 p.m.

We gratefully acknowledge the support of the Canada Council for the Arts.



Sir Wilfred
Grenfell College **Art
Gallery**

**Memorial University
of Newfoundland**

Sir Wilfred Grenfell College Art Gallery
Fine Arts Building, University Drive
Corner Brook, NF, A2H 6P9
Telephone: 709-637-6209
Hours: Mon. to Sat., 11-5 p.m.

Anne Meredith Barry

Gros Morne Journals and Translations

June 21 - September 15, 2001





Anne Meredith Barry, Snow Melt #1, 2000, woodblock, 41 1/2 x 29 1/2"
 PHOTOGRAPH: NED PRATT

Sir Wilfred Grenfell College Art Gallery
 Fine Arts Building
 University Drive
 Corner Brook, NF
 A2H 6P9
 (709) 637-6209

We gratefully acknowledge the support of
 the Canada Council for the Arts.



The Canada Council
 for the Arts | Le Conseil des Arts
 du Canada

Gallery hours: Monday to Saturday
 11 a.m. - 5 p.m.



Memorial
 University of Newfoundland

046-220-05-01-75



Big Wave # 3 - Orange Moon (1988)
acrylic on canvas 106.7 x 152.4 cm
Collection of Geoffrey Lye & Kiloran McRae

Anne Meredith Barry: Natural Energies

May 11 - September 30, 2007

Opening Reception: Friday, May 11 at 8 pm

His Honour, the Honourable Edward Roberts, ONL, QC,
Lieutenant Governor of Newfoundland and Labrador will
officially open the exhibition.

Guest curated by Patricia Grattan

This project has been made possible in part through a contribution from
the Museums Assistance Program, Department of Canadian Heritage.

The Rooms Provincial Art Gallery
9 Bonaventure Ave. St. John's, NL
709 757 8000
www.therooms.ca



Canada Council
for the Arts

Conseil des Arts
du Canada



Canadian
Heritage

Patrimoine
canadien



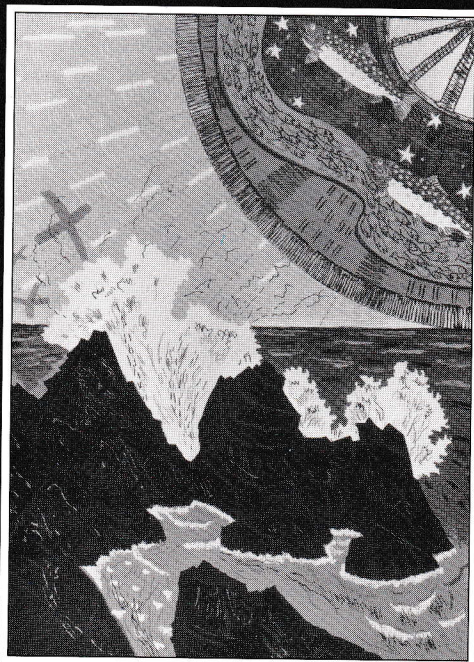
NEWFOUNDLAND FRIENDS

The "Artists for Kids" Trust is pleased to announce
the release of two new prints developed by
our artist patrons from Newfoundland,
David Blackwood and Anne Meredith Barry

**You are cordially invited
to a preview exhibition and sale
7:30 pm. November 22, 1993
Leo Marshall Center
810 West 21st Street,
North Vancouver, BC
604-987-6667**

*Opening night prices November 22nd only
Other prints in the AFK portfolio will be available*

ANNE MEREDITH BARRY



Sky Fan and Star Fish, 1993 edition 60



Anne Meredith Barry, New Passengers Arriving For The Northern Ranger – Oil on Canvas 36" x 48" 1994

Anne Meredith Barry

Charting A Journey: To Nain and Back

October 8 - October 29, 1994

Opening Saturday, October 8th, 1994, 2 p.m.

Artist will be present

Emma Butler Gallery

111 George St., St. John's, Newfoundland A1C 6K2
(709) 739-7111



ANNE MEREDITH BARRY

Coastlines

October 22 - December 1, 1994

Opening Reception

Saturday, October 22, 3 - 5 p.m.

The artist will be in attendance.

gallery one

121 Scollard Street, Toronto, Ontario M5R 1G4 (416) 929-3103

Member of the Professional Art Dealers Association of Canada (PADAC)

gallery hours: Tuesday - Saturday 10:30 - 5:00

Cover: *Coastal Journey, Day 13: Fox Harbour* 1994, Oil on canvas, 36 x 48 ins.



"Winter Window #2", Linoleum Block print 1994 Anne M. Barry



Anne Meredith Barry

"Where the Wind Blows" paintings & prints

February 27- March 18, 1998

Opening Reception

Friday, February 27, from 5 to 7:30 pm.
Come and meet the artist

Studio 21
FINE ART

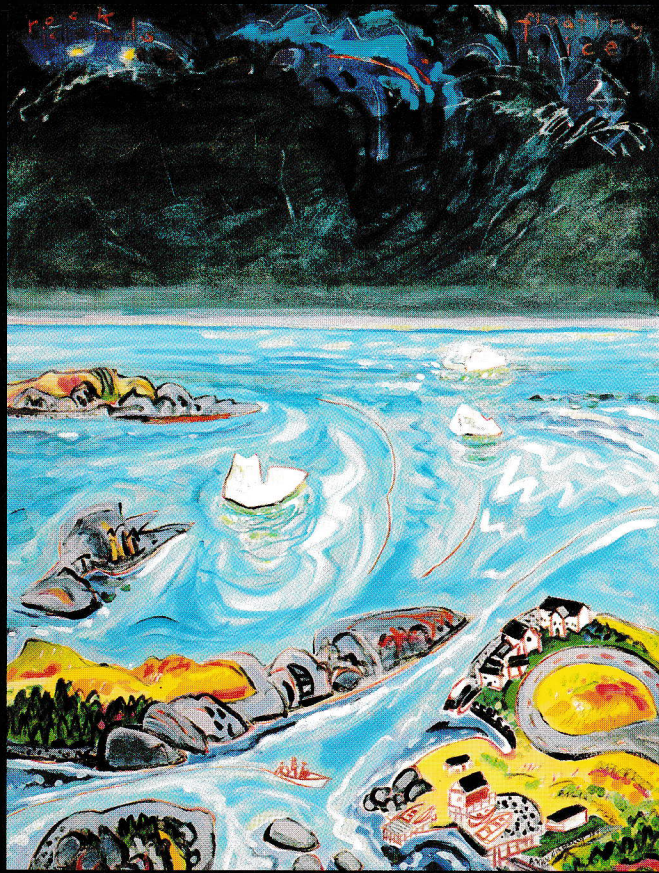
**we've
moved!**

1223 Lower Water Street, Halifax
Nova Scotia B3J 3S8
Canada

phone/fax: (902) 420-1852
Gallery hours: Tues. - Fri. 11-6 Sat. 10-5

Postcards are available at Studio 21

Anne Meredith Barry "Hot and Cold Spring" 48" x 36" oil on canvas ©Anne Meredith Barry



ANNE MEREDITH BARRY



MASTERS GALLERY

*is pleased to announce its first major
Exhibition & Sale
of new work by*

Anne Meredith Barry

Preview

Thursday & Friday
December 2 & 3, 1993
10:00 a.m. to 5:30 p.m.

Sale

Saturday
December 4, 1993
commencing at 10:00 a.m.

Masters Gallery Ltd.

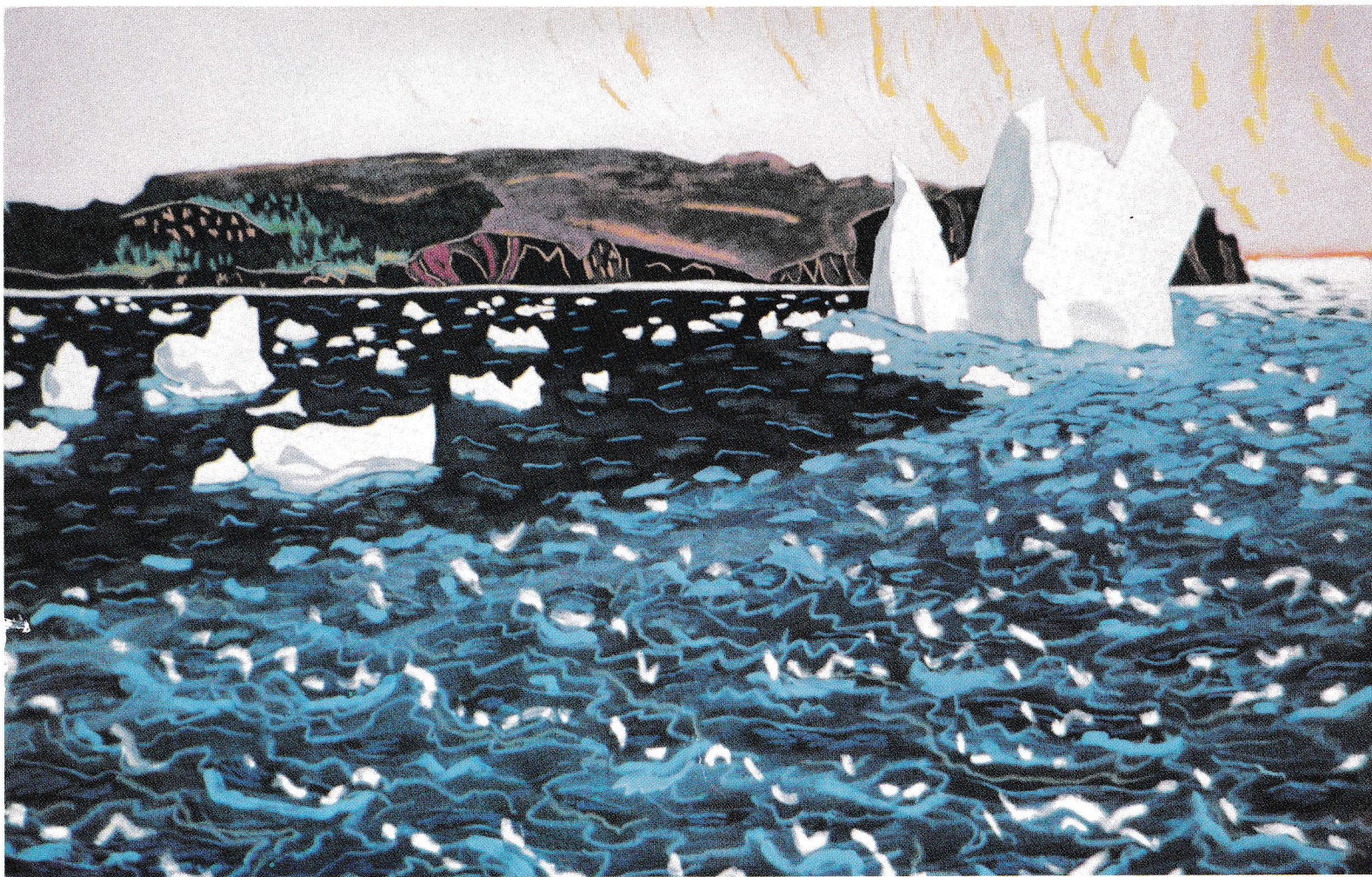
815 C - 17th Avenue S.W., Calgary, Alberta T2T 0A1 • 245-2064 • 245-2065
Member Professional Art Dealers Association of Canada Inc.

**Anne
Meredith
Barry**

Meredith Barry

Anne Meredith Barry was born in Toronto in 1932 and graduated from the Ontario College of Art in 1954. She now lives in the small rural outport village of St. Michael's, on the southern shore of Newfoundland's Avalon Peninsula. Though her subject is the landscape, Anne Meredith Barry can hardly be designated a traditional "landscape painter". Instead, the Newfoundland landscape, the geography of her immediate environment, becomes the visual springboard for her works.

"My home and studio are located in a small Newfoundland village, perched on the edge of the North Atlantic Ocean. I live in an environment characterized by constant change...turbulent weather, the four dramatically different seasons, and the endless rhythmic migrations of icebergs, whales, seabirds, fish,...everything in harmony and in conflict, everything creating and destroying one another. My work acknowledges this fragile and fluid world in all of its tremendous beauty, and through my work I try to deal in a very personal way with my observations and feelings about some of these changing forces."



RECENT WORKS

ANNE MEREDITH BARRY

ANNE MEREDITH BARRY

NOVEMBER 2ND - 30TH, 1991

**RECEPTION, THURSDAY, NOVEMBER 14TH,
6 - 9 P.M.**

THE ARTIST WILL BE IN ATTENDANCE.

RECENT WORKS

**BUSCHLEN
· MOWATT ·
GALLERY**

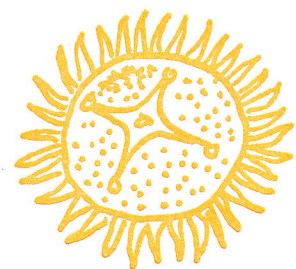
**1445 WEST GEORGIA STREET,
VANCOUVER, CANADA V6G 2T3**

TEL: (604) 682-1234

FAX: (604) 682-6004

OPEN 7 DAYS A WEEK, MON - SAT 10 - 6, THURS TIL 9, SUN 12 - 5

ICEBERG AND GROWLERS OFF WITLESS BAY BEACH, MIXED MEDIA OIL ON PAPER, 30" X 49 1/4", 1991



Anne Meredith Barry, Tara Bryan, and Kevin Major

offer for your consideration

Gros Morne Time Lines

inspired by the spectacular history and physical features of the west coast of Newfoundland

From the moment you loosen the caribou bone toggles and remove the book from its wrapper, you realize that this is an artwork of rare handcrafted quality. Inset in the cover title is a thin polished rectangle of ancient stone from the earth's mantle. The blend of text and imagery is uncovered two intimate pages at a time, or unfolded completely to a striking expanse of 18 feet. The black and white linocuts, contrasted with an array of surprising colour, fuse with the handset type of the prose poem. Each section captivates the reader in its detail—the precise drawings, the blind embossing, the uncommon spacing of the text, the use of a time-worn photograph of the writer's ancestors, the enclosure of hand-drawn postcards and a block of stamps of native mammals. Gros Morne Time Lines takes the artistic response to Newfoundland in a new and fascinating direction.

Gros Morne Time Lines is produced in a limited edition of 65, each numbered and signed by all three artists. The book measures approximately 12 by 9 inches. The type is Bembo Roman, printed on Lana Verge Antique. Until October 31, 2000, the book is being offered at the introductory price of \$900 (\$600 USD) plus taxes and shipping. Books are available for immediate delivery.

The book can be viewed at The Emma Butler Gallery in St. John's, Gallery One in Toronto, and at www.tarabryan.com. To order, or for further information, contact Tara Bryan, walking bird press, 63 Deermarsh Road, Flatrock, Newfoundland A1K 1C8. phone: 709-437-1963



A. Meredith Brown 1993

ANNE MEREDITH BARRY

New Found Land – Recent Works

September 7, 1993 – October 8, 1993

Reception, Saturday, September 18, 2–4 p.m.
Artist will be in attendance

Preview for Discovery Members only: Thursday, September 16, 7:30 p.m.

BUSCHLEN
•MOWATT•
GALLERY

1445 West Georgia Street, Vancouver, Canada V6G 2T3 • 682-1234

Open seven days a week

Monday to Saturday, 10 – 6 • Sunday, 12 – 5

© Anne Meredith Barry
"Looking Back at Brigus"
mixed media & oils on black
arches paper 30" x 44"

"North Easter", 1987, acrylic on canvas, 72x94"

ANNE MEREDITH BARRY

May 7 - 28

Opening: Saturday, May 7, 2 p.m. - 5 p.m.



GERALDINE DAVIS GALLERY

225 Richmond Street West

Toronto, Ontario, Canada

M5V 1W2

(416) 595-5225
